

# Elver-1 EcoScope Service RT 500MD

Format: ECO-SON-GVR\_500MD\_RT

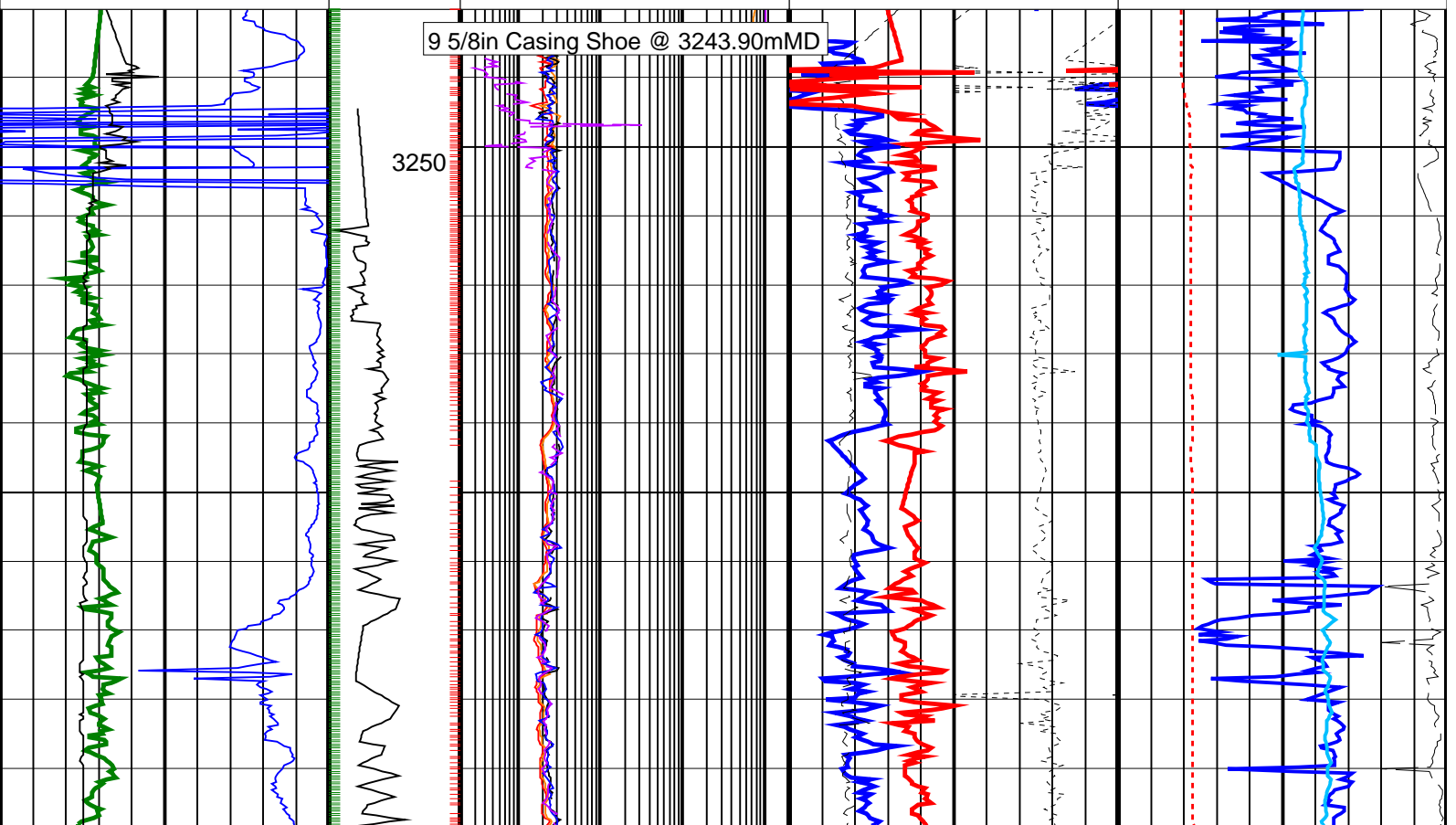
Vertical Scale: 1:500

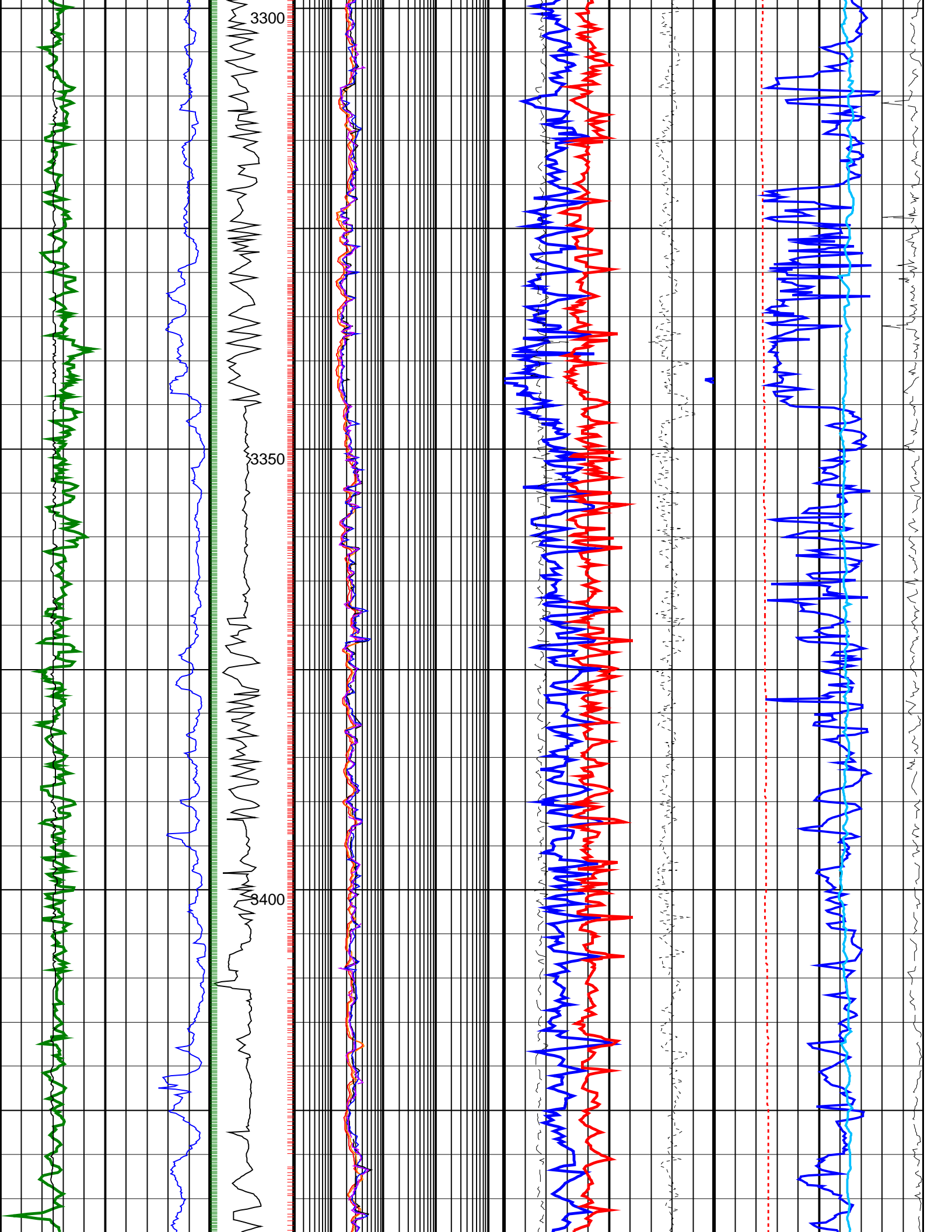
Graphics File Created: 11-Jan-2009 17:46

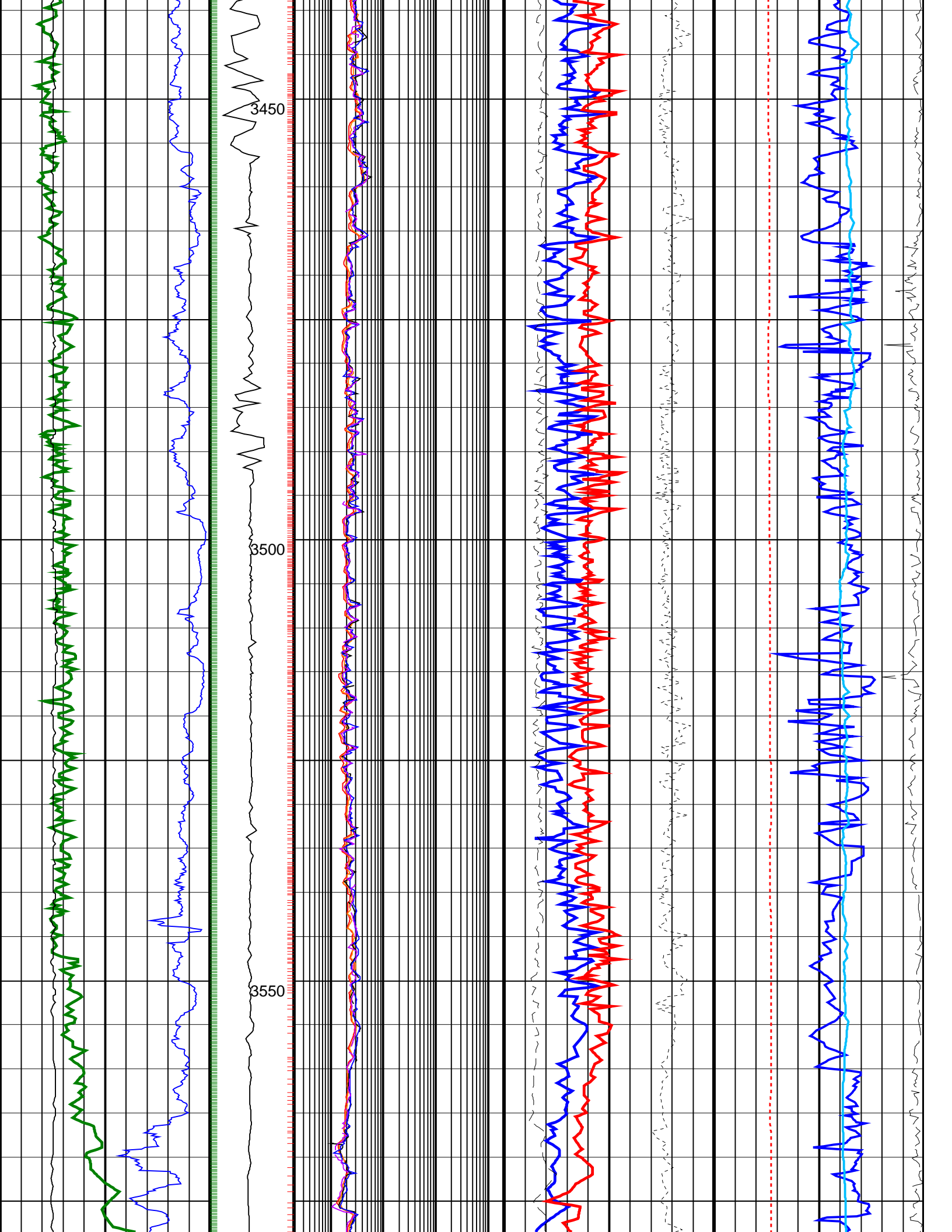
## PIP SUMMARY

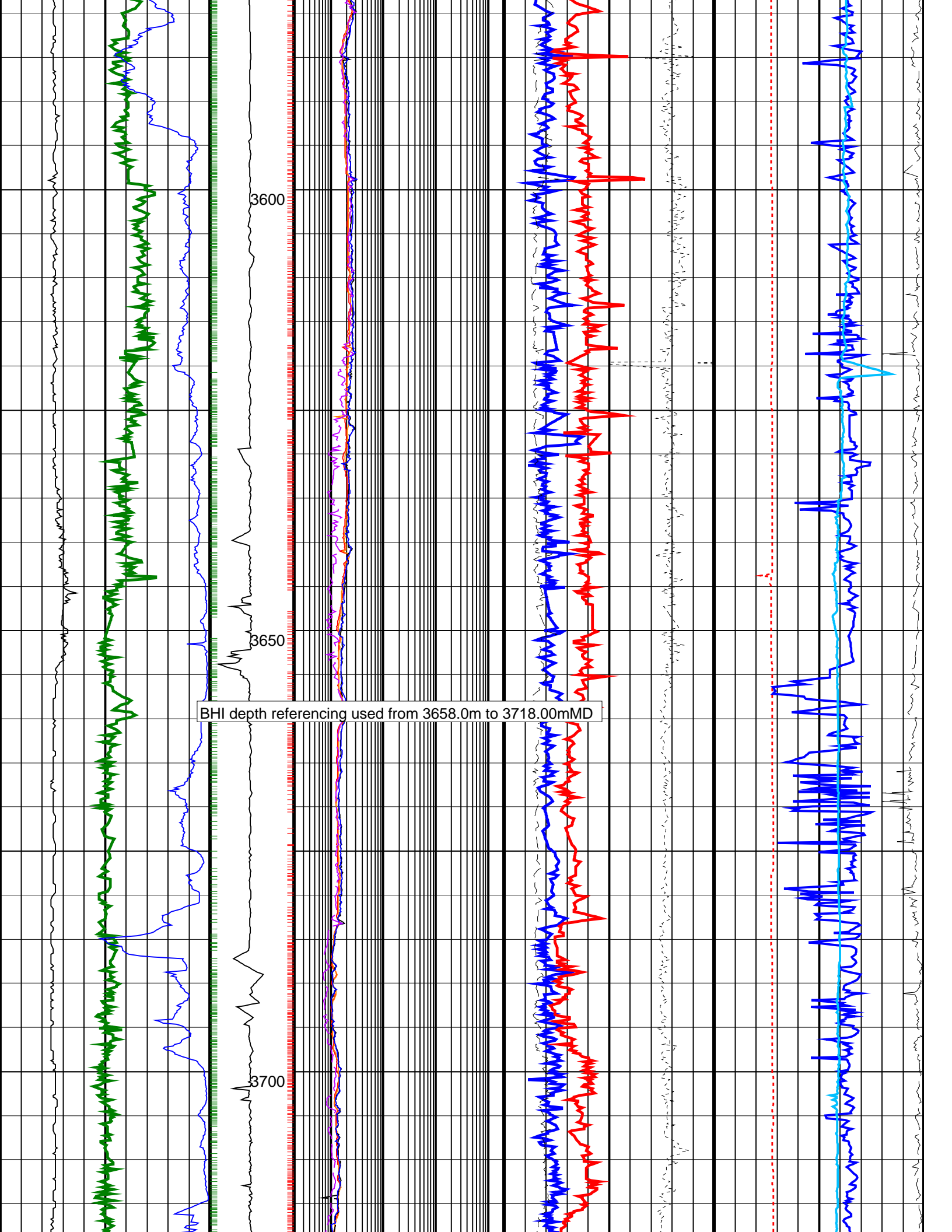
- └ Gamma Ray Samples
- └ Resistivity Samples

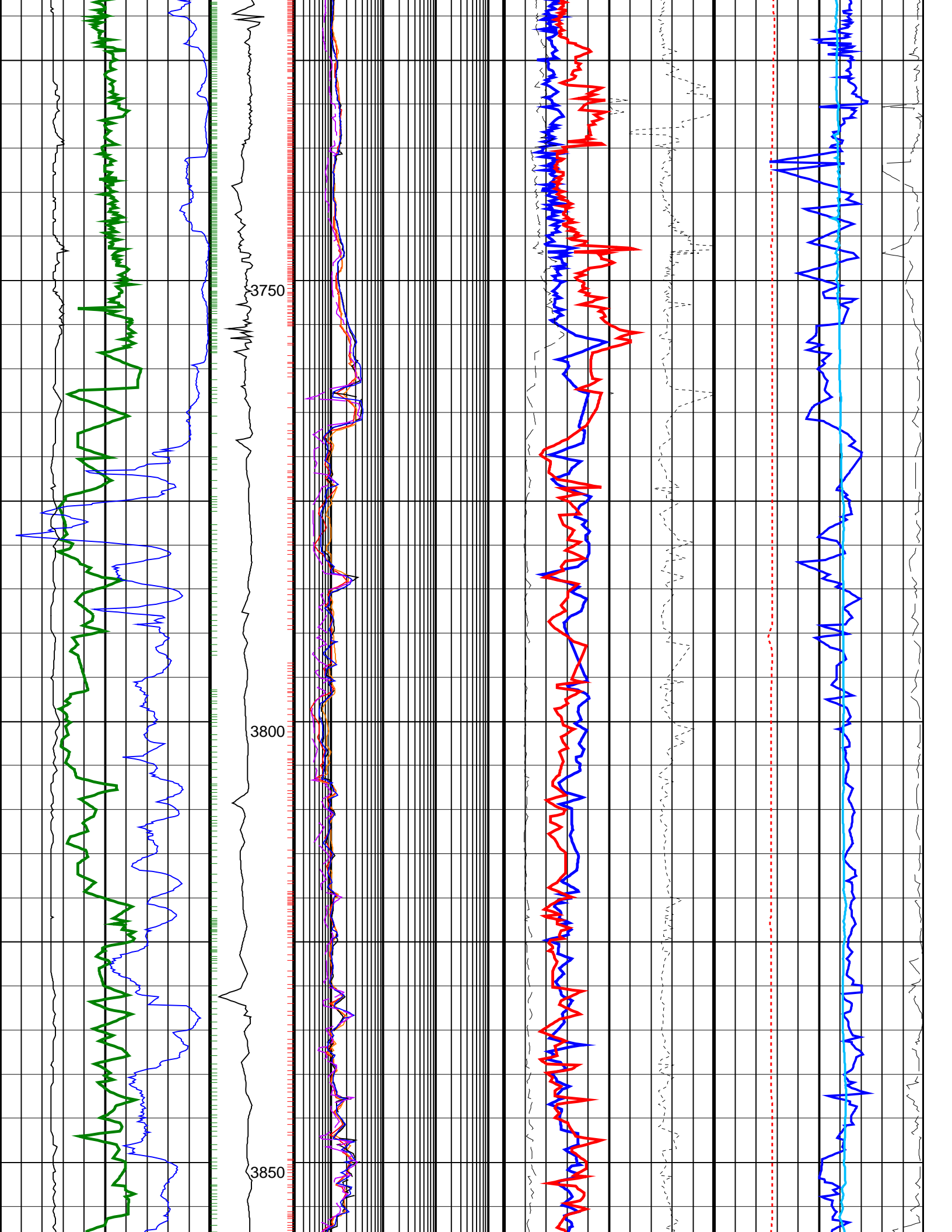
|   |  |   |   |   |  |  |  |
|---|--|---|---|---|--|--|--|
|   |  | Shallow Button Resistivity,<br>Real-Time (RES_BS_RT)                        |   |   |  |  |  |
|   |  | 0.2 (OHMM) 2000   |   |   |  |  |  |
|   |  |   |   |   |  |  |  |
|   |  | Deep Button Resistivity,<br>Real-Time (RES_BD_RT)                           |   |   |  | Equivalent Circulating<br>Density, Real-Time (ECD_ ECO_RT)                         |  |
|   |  | 0.2 (OHMM) 2000   |   |   |  | 0.8 (G/C3) 1.6   |  |
|   |  |   |   |   |  |  |  |
| Ultrasonic Caliper, Average<br>Diameter, Real-Time,<br>Recomputed at Surface<br>(UCAV_ECO_RT) |  | Ring Resistivity, Real-Time<br>(RES_RING_RT)                                |   | Photoelectric<br>Factor,<br>Bottom,<br>Real-Time,<br>Computed<br>Downhole<br>(PEB_DH_ ECO_RT) | Bulk Density<br>Correction,<br>Bottom,<br>Real-Time<br>Computed<br>Downhole<br>(DRHB_DH_ ECO_RT) | Delta-T Compressional,<br>Real-Time (DTCO_RT)                                      |  |
| 6 (IN) 16   |  | 0.2 (OHMM) 2000   |   | 0 (---- 10  | -0.25 0.25   | 40 (US/F) 140  |  |
| Gamma Ray, Average,<br>Real-Time (GRMA_ECO_RT)  |  | ARC Phase Shift Resistivity<br>40 inch at 2 MHz, Real-Time<br>(P40H_ECO_RT) |   | Bulk Density, Bottom,<br>Real-Time, Computed<br>Downhole (ROBB_DH_ECO_ RT)                    |  | Coherence at Compressional<br>Peak, Real-Time (CHCO_RT)                            |  |
| 0 (GAPI) 200  |  | 0.2 (OHMM) 2000   |   | 1.95 (G/C3) 2.95  |  | -4 (---- 1   |  |
| ROP*5 (ROP5)  |  | MWD Collar<br>RPM<br>(CRPM_RT)<br>(RPM)                                     | ARC Phase Shift Resistivity<br>16 inch at 2 MHz, Real-Time<br>(P16H_ECO_RT) | Best Thermal Neutron<br>Porosity, Average, Real-Time<br>(BPHI_ECO_RT)                         |  | Downhole Annulus<br>Temperature, Real Time,<br>Computed Downhole (DHAT_ DH_ECO_RT) |  |
| 200 (M/HR) 0  |  | 0 400   | 0.2 (OHMM) 2000   | 0.45 (V/V) -0.15  |  | 0 (DEGC) 200   |  |

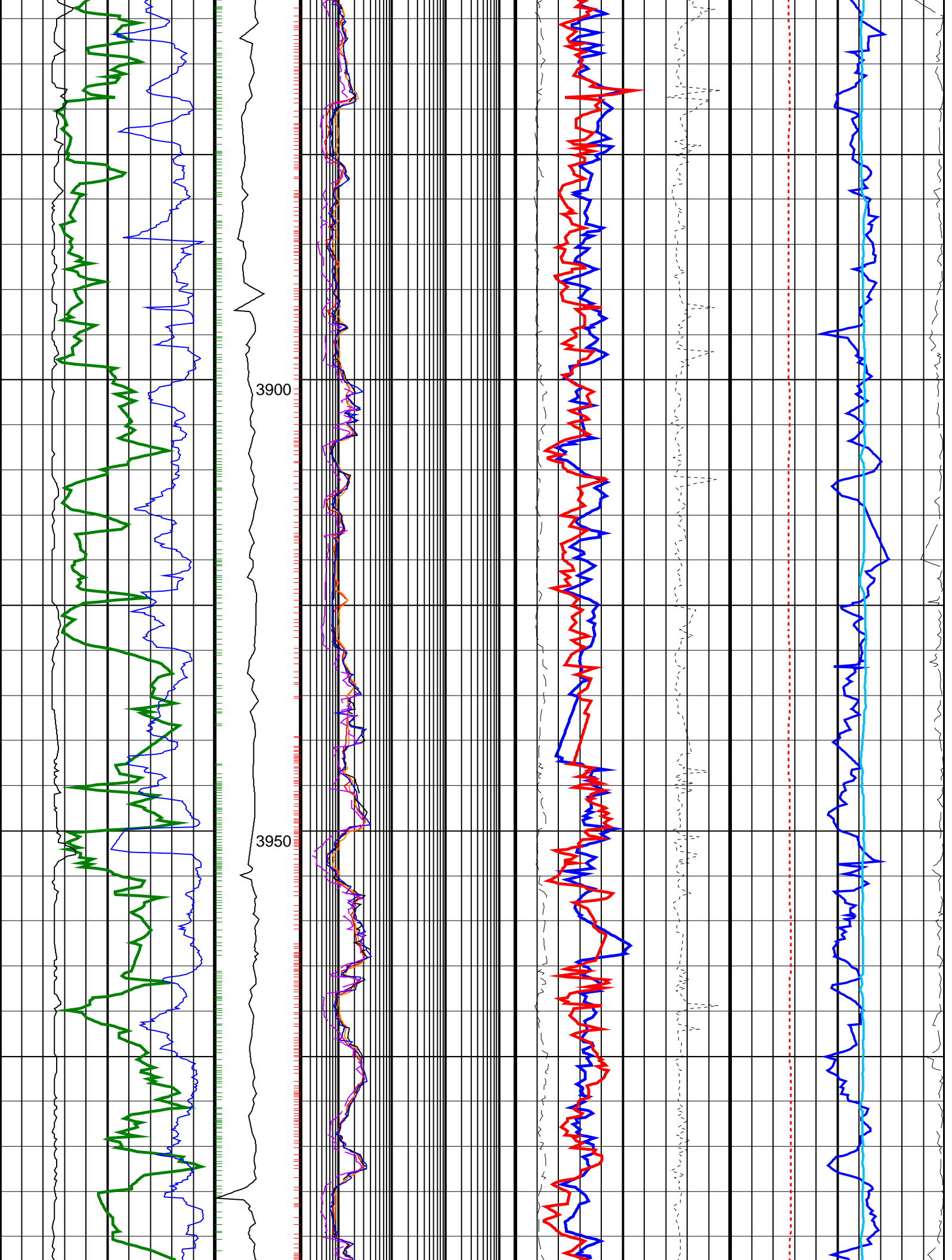


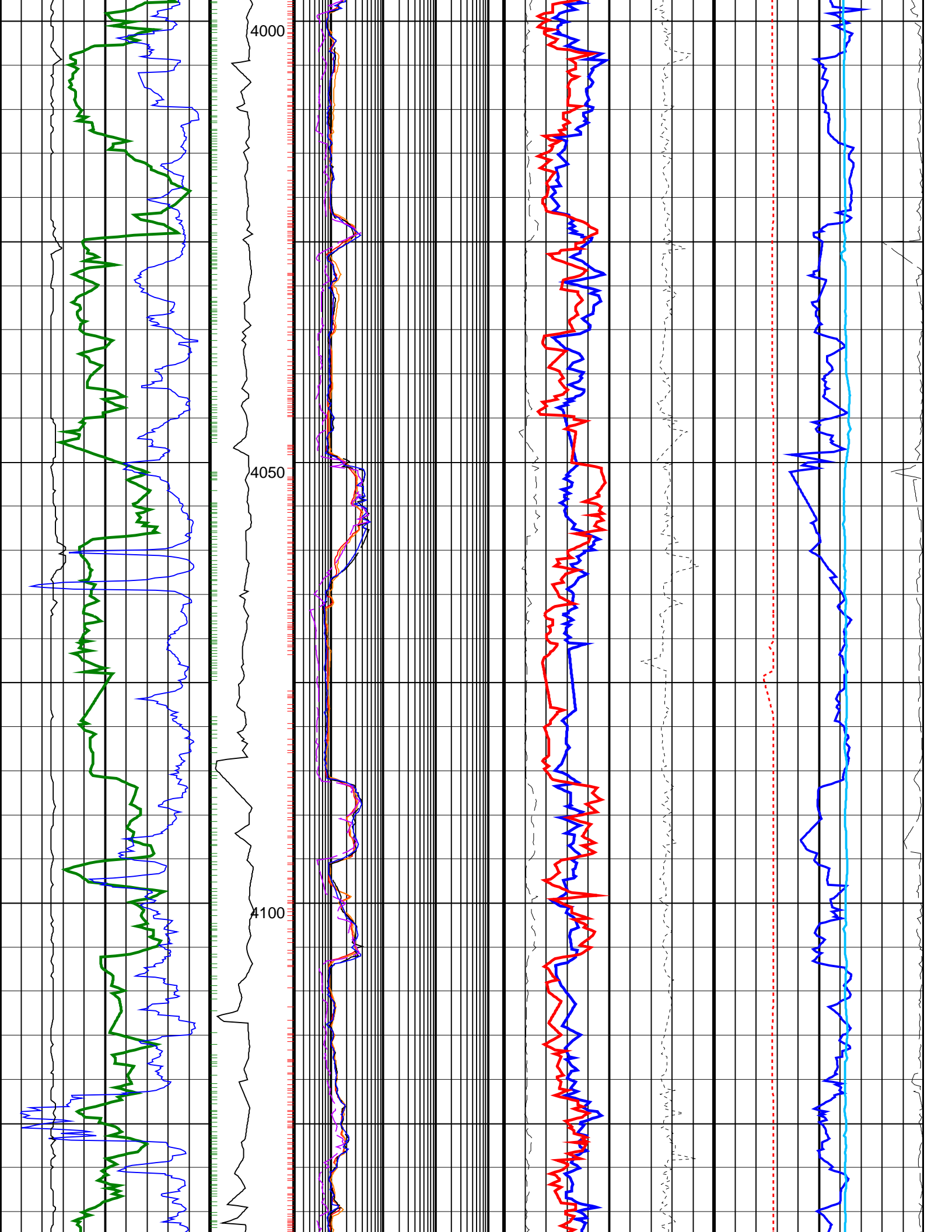




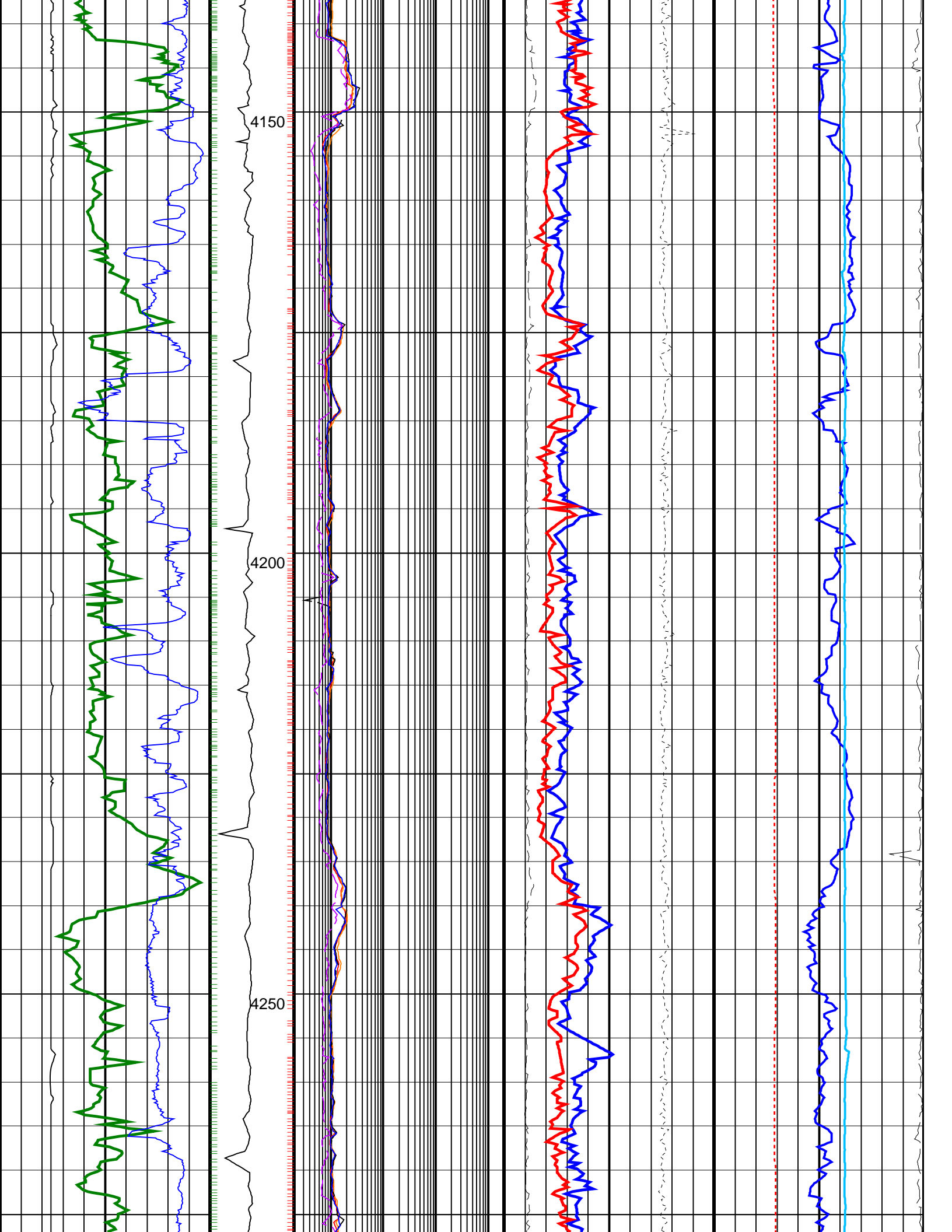




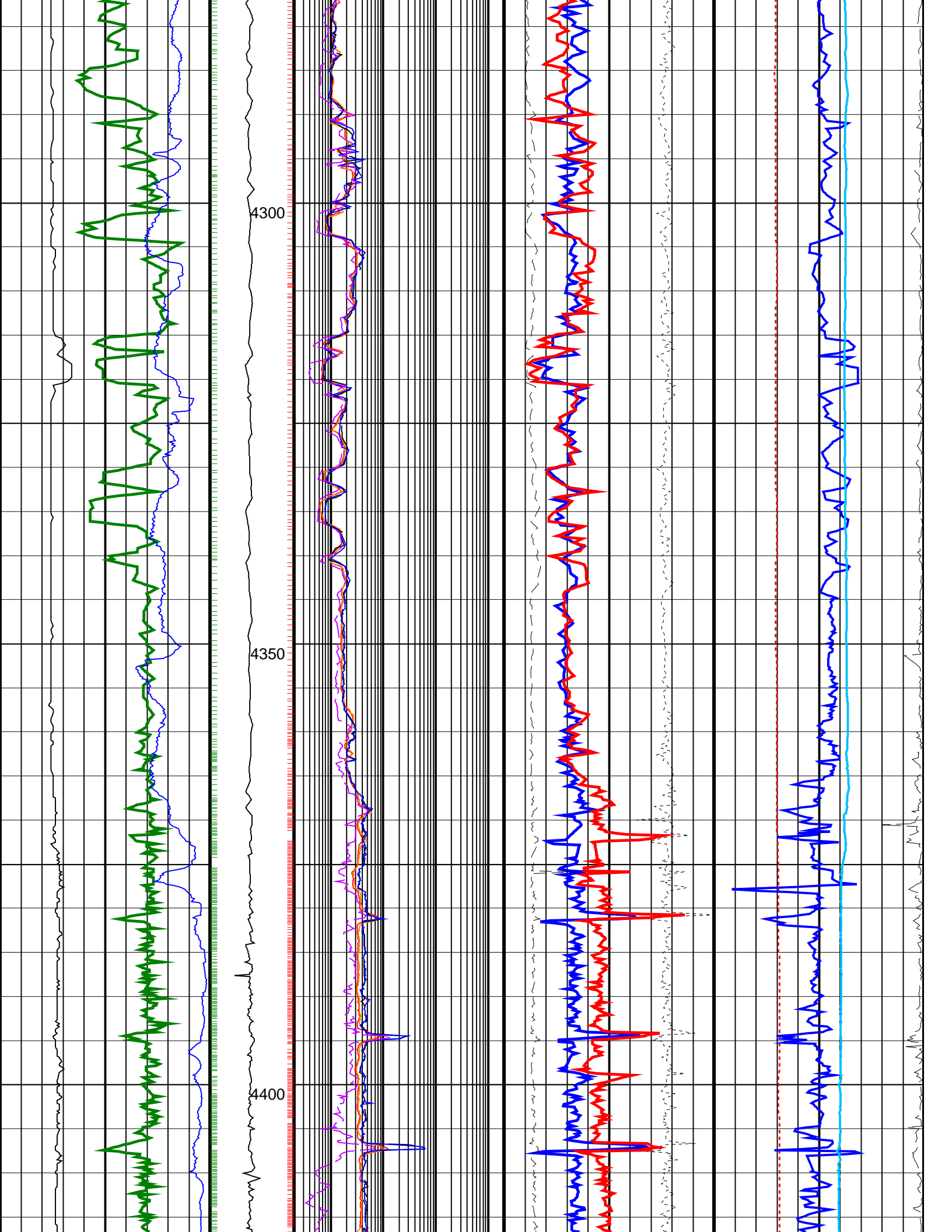












Run 5 Bottom Log Interval @ 4425.20mMD

